

## Product Life Cycle Support Notice

### Instron Bluehill® 2 Software Phase 3 – Out of Production/Best Effort Support

This is a formal notice to inform you that the Instron Bluehill 2 software has entered Product Life Cycle Phase 3 – Out of Production/Best Effort Support. The section below details the conditions which apply to a product in Phase 3. Eventually, the product will enter Phase 4, “Discontinued”, the final Product Life Cycle Support Phase with no support or further updates of any kind.



Instron’s Product Life Cycle Policy is intended to help you plan the maintenance and ultimate evolution of your Instron test system. Notices such as this one are issued at life cycle milestones to inform you of pending changes and provide recommendations on how to move forward.

**Phase 3 – Out of Production/Best Effort Support** nears the end of the Product Life Cycle. This formal designation means that products are no longer in production and service support is on a best-effort basis, where sourcing parts for your system will take longer and will be at a higher cost. Advance notification of transition to **Phase 4 – Discontinued**, the final Product Life Cycle Support step, will be provided for these affected products. For safety and data integrity issues, customers will be notified.

### Bluehill 2 Support in the Phase 3 Life Cycle

Instron Bluehill 2 software was introduced in 2006. An upgrade to the newer Bluehill 3 software was recommended to all users in 2010. With the evolution from Windows 7 and 8 to Windows 10, as well as advancements in technology, Bluehill 2 moves to this next support phase.

The following conditions apply to Bluehill 2 software in the “End of Production / Best Effort Support” life cycle phase:

- No further additions of features or enhancements
- No support for newer Instron hardware accessories
- No support for newer PC hardware or operating systems
- Technical phone support and operator training are on a “best effort” basis

### Affected Instron Systems

- All Instron test frames running Bluehill 2 software
- All IPG Static Hydraulic, Torsion, or legacy EM test frames running Bluehill 2 software

**The longer you delay a decision, the higher your laboratory is at risk for:**

- Extended periods of downtime
- Missed business opportunities
- Higher repair or replacement costs

## Take action now to protect your laboratory:

- Improve efficiency with the latest industry solutions capabilities
- Increase operator productivity with user-friendly software
- Protect your competitive advantage for the long term

### Why Migrate to Newer Technology?

Upgrade and Replacement Recommendations



### Why Migrate to Newer Technology?

- Improved accuracy and resolution
- Touch Display operation without use of a keyboard or mouse
- Full-function handset with live displays, real-time results, and most frequently used function keys
- Fully integrates with the newest Instron Bluehill® Universal Software and accessories
- Computer control, analysis, and test reports (*no chart paper or manual analysis*)
- Conforms to latest industry safety standards
- Support for strain measurement using extensometers and LVDTs, including the newest Instron video and automatic contacting extensometers
- High-Speed Data Acquisition (increased from 50 to up to 2.25 kHz) - enables peak data to be detected more accurately in tests
- Enter and save important test and user information with new User Input Text and Numeric Fields
- Guided test prompts offer GPS-like navigation throughout the testing process
- Expanded results library meeting the latest ASTM, ISO, and DIN standards, including a user calculation creator
- Complete test display flexibility with user-defined test plot axes, zoom-in/out, and cursor selectable capability
- Webcam option for recording and replaying tests



### What are your Options?

Bluehill® Universal Upgrade

Bluehill Universal is the latest generation materials testing platform designed from the ground-up for touch interaction and is fully compatible with the latest Windows operating system. All Bluehill 2 software users with Instron 3300, 5500, 5500A, 5900 test frames should consider upgrading to Bluehill Universal software. Existing test methods and test data can be easily converted. Bluehill 2 software users with other test frames should consult with their Instron representative for upgrade migration path recommendations.



Simpler. Smarter. Safer.

# BLUEHILL UNIVERSAL



Bluehill Universal was built from the ground-up for touch interaction. The new portrait layout, with its meticulously crafted visual design, gives the most comprehensive view of the test workspace on the Operator Dashboard, a stunning large-format touch monitor with an integrated controller.

Bluehill Universal's large touchpoints and intuitive gestures make the user experience simpler and smarter. Easy-to-understand icons and workflows make it easy to train new or experienced users, simplifying operator training, and allowing you to start testing even faster.



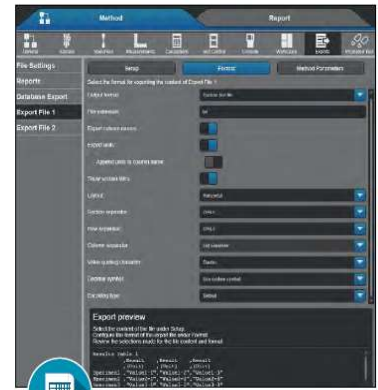
### QuickTest

For when you need results fast, QuickTest allows you to simply enter a few simple parameters and run your test within seconds.



### Expression Builder

Build your own user-defined functions using a list of variables from the method. Users can write functions for detecting test events, defining new calculations, making measurements, or setting domains for calculations.



### Exporting Tools

Whether you need a polished PDF report, or a customized file to integrate with your lab information management system, Bluehill® Universal's exporting tools have the flexibility to output results, user inputs, raw data, graphs, and more in a wide variety of formats.



### Effortless Workflows

An easy-to-use touch interface, built from the ground up with ergonomics in mind, optimizes your testing workflow.



### Increased Efficiency

Console functions and numerical keypads are conveniently located and accessible, making your testing faster and easier.



### Advanced Capability

Powerful Bluehill® architecture gives you complete control over how you set up test methods, allowing you to achieve optimal results.

[www.instron.com](http://www.instron.com)



Worldwide Headquarters  
825 University Ave, Norwood, MA 02062-2643, USA  
Tel: +1 800 564 8378 or +1 781 575 5000

European Headquarters  
Coronation Road, High Wycombe, Bucks HP12 3SY, UK  
Tel: +44 1494 464646